



**Open Space & Recreation Advisory Committee Meeting Agenda
Tuesday, April 7, 2026, at 9:00 AM
Council Chambers - Eagle Town Hall
200 Broadway Eagle, CO 81631**

This agenda, meetings, and information about the Committee can be viewed at www.Townofeagle.org.

OSRAC MEETING ACCESS INFORMATION

This will be an in-person meeting with access via Microsoft Teams. First-time users of Microsoft Teams will need to download the free app before joining the meeting.

[Join the meeting now](#)

Meeting ID: 260 306 574 575 80

Passcode: Xt7SP75A

Call in information: [+1 469-770-0416](tel:+14697700416), [613415696#](tel:+1613415696)

Phone conference ID: 613 415 696#

[Download Teams](#) | [Join on the web](#)

9:00 a.m. CALL TO ORDER AND ROLL CALL

9:05 a.m. PUBLIC COMMENT (Non-Agenda Items; 3-Minute Limit Please)

9:10 a.m. ADOPTION OF THE AGENDA

9:13 a.m. APPROVAL OF THE MARCH MINUTES

9:15 a.m. DISCUSSION / BUSINESS ITEMS

9:15 a.m. (15 min) Manager Update

9:25 a.m. (60 min) Trail Proposal – School House Rock to Kill Bill Connector

10:25 a.m. FUTURE BUSINESS ITEMS

10:30 a.m. ADJOURN



**Open Space & Recreation Advisory Committee Meeting Agenda
Unapproved Meeting Minutes
Tuesday, March 3, 2026, at 9:00 AM
Council Chambers - Eagle Town Hall
200 Broadway Eagle, CO 81631**

This agenda, meetings, and information about the Committee can be viewed at www.Townofeagle.org.

9:00 a.m. CALL TO ORDER AND ROLL CALL

- Members present: Ernest Saeger, Roger Mitchell, Phillip Kirkman, Dan Lambert, Chris Cohen (online).
- Members absent: Jessica Foulis, Chris Kehoe, Ryan Gilmer
- Council representative: Jamie Woodworth Foral
- Staff Present: Alex Smiley, Open Space and Trails Manager

9:05 a.m. PUBLIC COMMENT (Non-Agenda Items; 3-Minute Limit Please)

- **No public comment**

9:10 a.m. ADOPTION OF THE AGENDA

- Motion: Dan Lambert
- Second: Phillip Kirkman
- Vote: Passed unanimously

9:13 a.m. APPROVAL OF THE FEBRUARY MINUTES

- Motion: Dan Lambert
- Second: Ernest Sager
- Vote: Passed unanimously

9:15 a.m. DISCUSSION / BUSINESS ITEMS

9:15 a.m. (15 min) Manager Update

- Hiring update
- Site management updates

9:25 a.m. (60 min) Governance Review – Bylaws, Town Code, and Project Review Authority

- Review of Council work session presentation
 - Comments from committee on presentation details
 - Comments from committee on OSRAC purpose
- Review of governing documents
 - Suggested changes by Alex
 - OSRAC Specific
 - Multiple sections discussed and reviewed for changes

- Draft of changes will be prepared by Alex and attached to future OSRAC meeting agenda for review
- TOE Open Space Code
 - Multiple sections discussed and reviewed for changes
 - Draft of changes will be prepared by Alex and attached to future OSRAC meeting agenda for review

10:25 a.m. FUTURE BUSINESS ITEMS

- New Trail Proposal (Deferred from March Meeting)

10:30 a.m. ADJOURN

- Motion: Ernest Sager
- Second: Dan Lambert
- Vote: Passed unanimously
- Meeting adjourned: 10:50 a.m.



To: Open Space and Recreation Advisory Committee

From: Alex Smiley, Open Space and Trails Manager

Date: April 2, 2026

Agenda Item: School House Rock to Kill Bill Trail Proposal

Request:

Staff requests that the Open Space and Recreation Advisory Committee review and discuss the School House Rock to Kill Bill Trail (SH/KB) proposal and provide a recommendation to Town Council regarding the proposed trail.

Background:

The School House Rock to Kill Bill (SH/KB) trail proposal originates from the [2022 Town of Eagle Open Space and Trails Master Plan](#) (see Attachment 2), which identified several conceptual trail recommendations intended to improve connectivity, address unmanaged recreational use, and balance recreation with environmental and wildlife considerations. Development of the Master Plan included extensive public engagement and coordination with local, state, and federal partners.

Building on these adopted concepts, the Hardscrabble Trails Coalition (HTC) has been developing a broader trail proposal within the Hardscrabble area that reflects the Master Plan's recommendations. This broader proposal includes multiple trail concepts on federal lands and is being advanced through the Bureau of Land Management's planning and environmental review processes.

The 2022 Master Plan lists habitat protection and wildlife health and diversity as high priority goals as well. The construction of new trails has the potential to displace wildlife and segment habitat. One of the core responsibilities of OSRAC is to navigate the trade-offs between providing recreation opportunities and preserving habitat throughout the open space and surrounding public lands.

[The Abrams Creek and Eagle Ranch Open Space Management Plan](#) further identifies these lands as important for wildlife habitat conservation as well as for recreation access, reinforcing the need to balance recreation with ecological function in this area.

The SH/KB Connector represents one component of this larger trail proposal and includes segments located on Town of Eagle Open Space. The Committee may discuss and provide comment on the broader trail proposal as a whole, however the town's jurisdiction applies only to the SH/KB trail and as such, staff requests a recommendation specifically on that.

[Town of Eagle Municipal Code Section 6.04.010](#) establishes the process for proposing new trails, including a pre-application review, public notice, and a public hearing before Town Council, which serves as the final decision-making authority.

Analysis:

The proposed School House Rock to Kill Bill (SH/KB) Connector would create a new 1.5-mile singletrack connection between two existing trails within the West Eagle trail system. Portions of the proposed alignment cross Town of Eagle Open Space, with the majority located on adjacent Bureau of Land Management (BLM) lands. The connector is identified in the Town of Eagle Open Space and Trails Master Plan and is intended to improve trail connectivity while consolidating unmanaged social use currently occurring in the area. To better understand the impacts of this proposal, staff has broken down the analysis into the following sections.

A. Purpose and Need

The proposal identifies a purpose and need centered on expanding trail system connectivity, addressing unmanaged social trails, and providing a designated natural-surface connection within an area experiencing existing use on undesignated trails. The proposed connector would create a direct singletrack link between the School House Rock and Kill Bill trails, improving loop opportunities and consolidating informal use into a designed and managed trail alignment.

It is important to note that an existing paved path already provides a formal connection between these two trail areas. As such, the proposed SH/KB Connector does not represent the only means of connectivity, but rather an alternative connection that emphasizes a natural-surface, singletrack experience and responds to existing off-trail use patterns. The proposal frames the connector as a way to manage and improve conditions where informal use is already occurring, rather than creating entirely new demand.

B. Wildlife Impacts and Seasonal Sensitivity

The proposed SH/KB Connector is part of a broader trail proposal that will undergo environmental review through the Bureau of Land Management (BLM) as part of its NEPA process. This review will include evaluation of wildlife impacts at a landscape scale and incorporate input from the public, Colorado Parks and Wildlife, as well as BLM's internal resource specialists.

This interagency review process will provide additional analysis of cumulative impacts and may result in design modifications, mitigation measures, or alternatives at a broader scale. However, at this stage, the Town's role remains focused on evaluating the segment located on Town-owned Open Space and determining whether it is appropriate within the context of local priorities and conditions.

The proposed SH/KB Connector is located within an area that provides habitat for a variety of species and is designated as mule deer and elk winter range. The trail would be subject to the Town's seasonal wildlife closure (December 1 – April 15), which is intended to reduce disturbance during critical winter and early spring periods. Improved compliance with seasonal closures in recent years, through signage and gating, has been identified as a positive trend.

The proposal suggests that construction of a formal trail could help consolidate existing social use into a single, managed alignment, potentially reducing the extent of dispersed disturbance across the landscape. Concentrating use in this manner can, in some cases, reduce habitat fragmentation compared to a network of informal trails.

At the same time, this drainage represents one of the few areas directly connected to Town of Eagle Open Space that does not currently contain a designated trail. As a result, it may function as relatively less disturbed habitat compared to surrounding areas with established trail infrastructure.

The absence of a designated trail in this area also presents management limitations. While the drainage is technically subject to seasonal wildlife closures, the lack of formal access points, signage, and defined routes may make closures more difficult to communicate, monitor, and enforce. Establishing a designated trail could improve the Town's ability to implement and manage seasonal closures in a more consistent and visible manner. Conversely, formalizing access may also increase overall use of the area, particularly outside of closure periods.

Information provided by Colorado Parks and Wildlife (CPW) indicates that recreation can affect wildlife through a range of mechanisms, including increased energy expenditure, reduced time available for foraging, displacement from preferred habitat, and impacts to reproductive success. These effects are particularly pronounced during winter and early spring, when animals are in a state of nutritional stress and rely on limited energy reserves for survival and successful reproduction.

The Abrams Creek and Eagle Ranch Open Space Management Plan identifies habitat fragmentation as a key consideration and notes that roads and trails can affect wildlife behavior and habitat use beyond the immediate tread. In this context, an important consideration is whether the proposed alignment would shift disturbance into areas currently mapped as core habitat or change the distribution of disturbance within the drainage (see Attachment 3).

C. Environmental and Watershed Impacts

As part of the broader trail proposal being advanced through the BLM process, the applicant completed a **botanical survey** (Attachment 4) for the proposed trail system to provide additional site-level information that can help inform future alignment refinement, mitigation, and agency review.

The botanical survey, completed by Birch Ecology in June 2025, evaluated proposed trail corridors for special status plants, significant plant communities, noxious weeds, wetlands, and other sensitive botanical features. Across the broader project area, the report identified a mix of mixed mountain shrublands, sagebrush shrublands, pinyon-juniper woodlands, aspen-mixed conifer forest, gypsum barrens, and limited riparian habitat.

For the West Eagle trails, including the SH/KB, the report found that Harrington penstemon, a BLM sensitive species, was present and was abundant along the eastern section of the SH/KB. The report recommends that final trail alignment be field-fit during construction to minimize impacts in areas with higher concentrations of this species.

The report also identified three Basin Big Sagebrush / Basin Wildrye communities in the West Eagle area, including one along the SH/KB. This vegetation type is identified in the report as a Significant Plant Community, and the report notes that BLM may recommend alignment adjustments to avoid it.

A

Attachment 1:

In addition, the weed mapping shows cheatgrass is most common along the SH/KB, and the report recommends integrated weed management during construction to limit spread of noxious and undesirable species.

Overall, the botanical report does not conclude that the SH/KB trail segment is infeasible, but it does indicate that construction would need to be attentive to rare plant occurrences and weed prevention measures.

In addition, a **Class III cultural resource inventory** (Attachment 5) was completed to supplement the assessment.

The Class III cultural resource inventory, completed by Chipeta Archaeological Site Investigations in August 2025, surveyed approximately 406 acres associated with the broader trail proposal. The inventory reevaluated three linear cultural resources, newly recorded one prehistoric open camp, and documented two isolated finds.

The cultural inventory suggests that cultural resources are present in the broader project area, but the report does not identify a clear cultural resource constraint that would independently preclude the SH/KB proposal. Rather, it indicates that known resources can be addressed through avoidance, continued agency review, and standard cultural resource compliance through the BLM process.

Wildfire / Fuels (potential fuelbreak corridor). If advanced, the SH/KB alignment could potentially be co-designed with Eagle Valley Wildland (EVW) as a fuel reduction corridor i.e., selective thinning and pruning to lower flame lengths and improve suppression access near neighborhoods. consistent with Eagle County's Community Wildfire Protection Plan and interagency fuels guidance.

D. Community and Adjacent Landowner Impacts

The proposed trail connection has the potential to provide community benefits by improving connectivity within the Town's trail system, dispersing use, and creating additional recreation opportunities on public lands. The proposal also identifies the presence of existing social trails in the area, which are currently used but not formally designated or managed. Formalizing a trail connection could help consolidate this use into a single, defined alignment, potentially reducing the proliferation of informal routes and improving overall trail management.

At the same time, the trail is located in proximity to private property and residential areas, which raises considerations related to user behavior, noise, privacy, and potential increases in trail traffic near adjacent landowners. While consolidating use may reduce dispersed impacts, a designated trail may also attract additional use or shift use patterns in ways that are more noticeable to nearby residents. These types of impacts are common with new trail development and are typically addressed through thoughtful alignment, appropriate setbacks, signage, and ongoing education around trail etiquette.

Overall, the proposal presents a trade-off between managing and consolidating existing recreational use and introducing a more formalized and potentially more visible trail presence near adjacent neighborhoods. The extent of these impacts may depend on final alignment, user behavior, and continued coordination with nearby landowners.

E. Operation, Maintenance, and Staffing Impacts

The applicant indicates that ongoing maintenance is anticipated to be primarily volunteer-driven, including support from Adopt-A-Trail programs and organized stewardship groups, with the potential for larger maintenance efforts to be coordinated with the Town or completed by contracted crews as needed.

This model is consistent with how many trails in the region are maintained and reflects a strong level of community and partner engagement. Formalizing the trail may also reduce the need for reactive management of dispersed social trails by concentrating use within a defined and designed corridor.

In addition to routine maintenance, the introduction of a designated trail may require ongoing staff coordination related to seasonal closures, signage, monitoring, and user education. These responsibilities may incrementally increase staff workload depending on use levels and management needs.

Overall, while the proposal identifies a partner-supported approach to construction and maintenance, the long-term operational implications for the Town remain uncertain and may require additional clarification regarding roles, expectations, and resource commitments.

F. Budget and Funding

The applicant estimates the construction cost of the SH/KB Connector to be approximately \$45,225 based on a preliminary review by a professional trail contractor. The proposal anticipates that construction would be supported through a combination of partner coordination and contracted services.

Based on typical industry ranges of approximately \$6–\$10 per linear foot for new trail construction, staff notes that the estimated construction cost for the SH/KB Connector appears to fall below the lower end of this range. This suggests an effort to develop a cost-conscious proposal, though final costs may vary depending on site conditions, design refinement, and construction methods.

Funding for trail construction projects has been approved within the Town's Open Space budget for 2026 and is available for implementation of priority projects. If approved, the SH/KB Connector could be supported through these existing funds.

Staff has identified an approach that would pair trail construction with restoration of existing social trails and targeted weed management within the project area. This integrated approach could help consolidate recreational use, rehabilitate disturbed areas, and address invasive species concerns as part of a single coordinated effort.

G. Alignment with Strategic Plans

The proposed SH/KB Connector is conceptually consistent with the Town of Eagle Open Space and Trails Master Plan, which identifies the Hardscrabble area as an important recreational asset and includes conceptual trail connections intended to improve network connectivity and user experience. The general intent of the proposal, to create a purpose-built trail that formalizes use and enhances connectivity, aligns with the Master Plan's emphasis on developing a cohesive and sustainable trail system.

At the same time, the Master Plan places significant emphasis on protecting wildlife habitat and maintaining ecological function across the landscape. In particular, the plan highlights the importance of minimizing habitat fragmentation, managing trail density, and carefully evaluating new trail development in areas that serve as important seasonal habitat for species such as elk and mule deer.

The Hardscrabble and East Eagle areas are identified as regionally important for wildlife due to their habitat diversity, topography, and role as winter range and migration corridors. As such, the Master Plan's dual goals of expanding recreational opportunities while protecting sensitive habitats can, at times, be in tension, particularly in areas where both values are high.

In this context, the SH/KB Connector can be viewed as advancing one component of the Master Plan (trail connectivity and system refinement), while also raising questions related to another core objective (wildlife and habitat protection). The proposal may help reduce the proliferation of social trails by concentrating use, but it would also introduce a new formalized trail into an area that currently provides habitat function and contributes to overall trail density.

This reflects a broader planning consideration identified in both the Master Plan and CPW guidance: that recreation and conservation goals are not always mutually exclusive, but require careful, site-specific evaluation to balance access with long-term resource protection.

H. Recreation and User Experience

The SH/KB Connector is proposed as a multi-use, multi-directional trail intended to serve a range of users, including hikers, dog walkers, mountain bikers, and equestrians. The project would expand close-to-home access to natural-surface trails and improve overall trail system legibility by formalizing a currently informal connection. The proposal emphasizes preserving a singletrack experience while improving sustainability and long-term manageability. If constructed, this will be a well-used and well-loved connector trail.

Community Input

Development of the 2022 Open Space and Trails Master Plan included extensive community engagement, including public meetings, open houses, surveys, and stakeholder coordination. Input gathered during that process identified strong community interest in maintaining and expanding trail connectivity, improving access to natural-surface trails, and addressing unmanaged social trails. At the same time, community members and agency partners emphasized the importance of protecting wildlife habitat, minimizing environmental impacts, and carefully considering trail density and placement within sensitive areas.

The applicant indicates that additional outreach has occurred as part of the broader Hardscrabble trail planning effort, including community engagement and coordination with agency partners. This outreach has helped inform the overall trail concept and alignment considerations.

The SH/KB Connector is conceptually consistent with several of the trail connections identified in the Master Plan; however, the plan does not evaluate site-specific impacts associated with individual trail segments and anticipates that each conceptual trail would be subject to further review. As such, prior

community input should be understood as general guidance rather than direct support or opposition to this specific proposal.

Should the proposal advance, additional opportunities for community and adjacent landowner input would occur as part of the required public notice and Town Council hearing process.

Recommend Action or Proposed Motion

Staff recommends that the Open Space and Recreation Advisory Committee review and discuss the SH/KB Connector proposal and provide initial feedback to staff on the project's benefits, constraints, and potential management considerations.

Given the site-specific nature of many of the considerations outlined in this memo, including wildlife habitat, proximity to adjacent neighborhoods, and existing social trail conditions, staff recommends that a site visit be conducted to better inform the Committee's understanding of existing conditions and the proposed alignment.

Staff recommends that the Committee provide initial feedback at this time and consider scheduling a site visit prior to making a formal recommendation to Town Council.

Attachments:

1. School House to Kill Bill Trail Proposal
2. Master Plan Trail Recommendation Map
3. Management Plan Habitat Map
4. Final Botany Report
5. Final Cultural Report



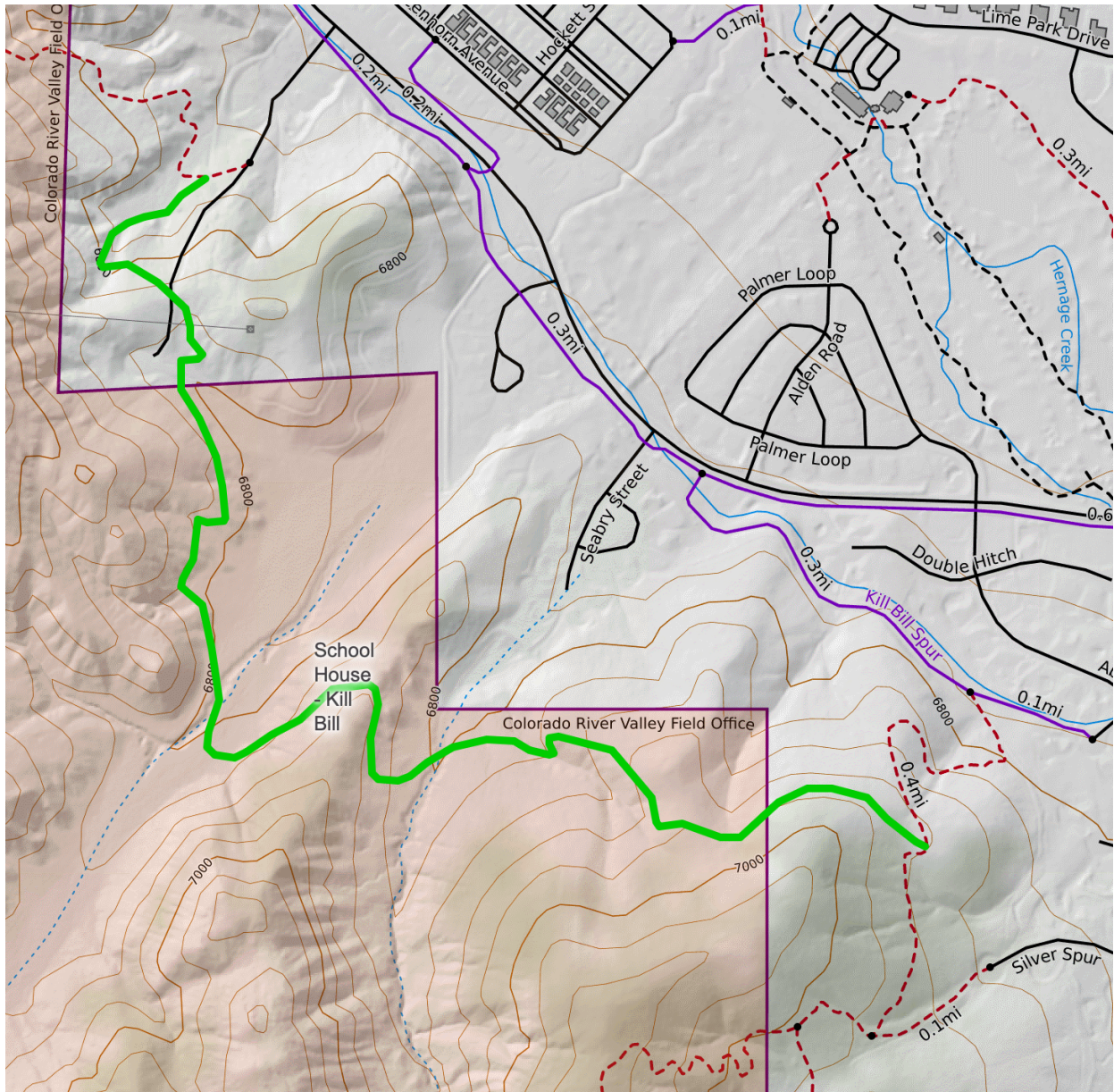
School House/Kill Bill Connector

Overview

Hardscrabble Trails Coalition and VVMTA are proposing a new singletrack trail that will connect the existing trails School House Rock and Kill Bill trails. Only a portion of this trail is on Town of Eagle Open Space, but the trail is identified on the Town of Eagle Master plan and provides a valuable connection between existing trails. Additionally, this trail will provide an opportunity for managed use in an area that sees quite a bit of unregulated use.

This connector is being proposed based on trail concepts in the Town of Eagle Open Space and Trails Master Plan. The public engagement process for the Town of Eagle's Open Space and Trails Master Plan was extensive, inclusive, and guided by a desire to balance recreation and conservation. It included a roundtable meeting with key stakeholders (such as CPW, BLM, Eagle Valley Land Trust, Eagle County, VVMTA, HTC and others), a community visioning open house attended by 50–60 people, and an online survey with 234 responses. Input was also gathered through focus groups on open space and trails, targeted outreach with community organizations, and multiple public meetings during draft review. These efforts highlighted the community's strong values around trail connectivity, open space preservation, maintaining existing infrastructure and wildlife conservation. The public supported new trails focused on improving the trail system opportunities and connections, while expressing concerns about impacts to wildlife and a desire for responsible recreation planning. In finalizing the concepts, additional input from the Town of Eagle, CPW, BLM and user groups (trail runners, hikers, bicyclists, motorized, equestrian users) was solicited and incorporated into the plan.

School House/Kill Bill Proposed Alignment



*Trail alignment is approximate.

*Botany and Archeo studies allow for a 100' corridor when the trail is being constructed

*Trail alignment minimizes site lines and impact on the adjacent neighborhood

*Eagle Valley Wildland has reviewed the SH/KB alignment and strongly agrees that it is a significant opportunity to provide fuels reduction and wildfire mitigation to protect the Town of Eagle.

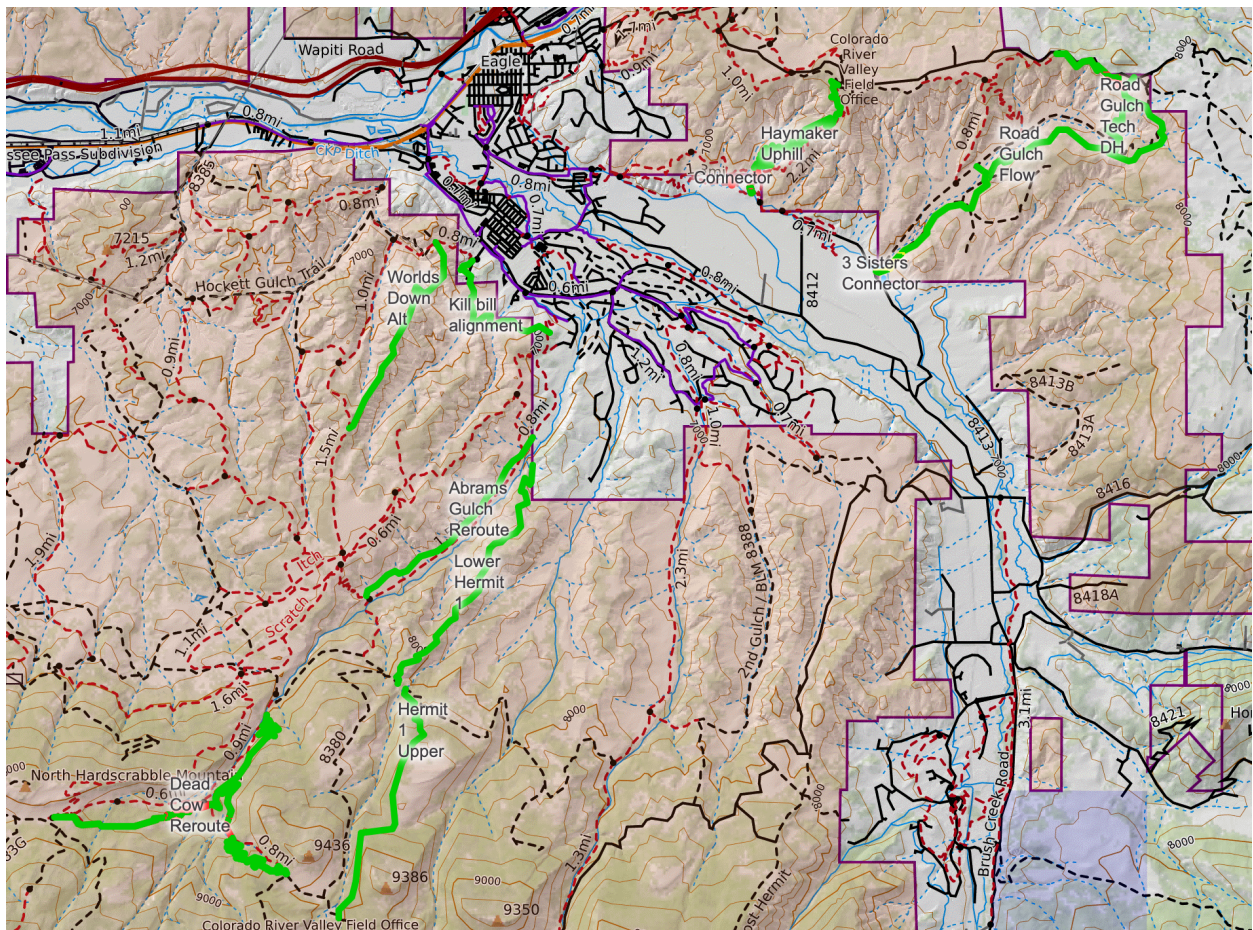
Hardscrabble SRMA Trail Proposal submitted to BLM

The School House/Kill Bill connector is part of a much larger trail proposal being submitted to BLM as part of an Environmental Assessment in accordance with their Resource Management Plan for the Hardscrabble SRMA. The plan focuses on not only improving the trail experience but making navigation and connectivity easier.

Goals of the plan include:

- A sustainable trail system to meet the needs of the community for the next 20+ years. Balance recreation, wildlife and environment by placing trail concepts in areas with existing impact.
- Ecological improvements to the Hernage Creek and Abrams Creek watersheds.
- Maintain open blocks of land to minimize fragmented wildlife habitat.
- Maximize new trail experiences with limited new mileage.
- Improve existing trails to provide better access.
- Provide different types of trail experiences for all users and abilities.
- Limit trail expansion in the southern portion of the East Eagle SRMA to preserve wildlife migration corridors.

Hardscrabble SRMA Proposal Map



BLM plans to open the environmental assessment for these trails in December of 2025. When the NEPA process begins there will be opportunities for public and stakeholder input, review by BLM specialists and feedback provided.

Hardscrabble SRMA Proposed Trails

East Eagle

Haymaker Uphill - Multi-directional, mellow grade trail designed for both easy climbing and beginner descending. The current uphill access in East Eagle is via the Boneyard trail which averages 6-7% but contains punchy sections of up to 20%. This trail is intended to be a significantly easier climb than Boneyard.

Hillbilly Extension Adds longer loop options while keeping trail within the existing impact of Road Gulch. Intermediate/Advanced, technical rocky experience.

Road Gulch Tech Proposed for a technical blue/black singletrack with options for alternate black/double black lines. This alignment is intended to make use of the natural character of the terrain.

Road Gulch Outer Loop Proposed with multi-directional use and focusing on views and backcountry experience. Will also provide looping options with Road Gulch Tech, Belly Up, Will's Thrill and all the trails in East Eagle.

Road Gulch Flow Proposed to improve the user experience from existing double track. A blue flow/jump trail with small-medium tabletops, berms, and opportunities for progression.

West Eagle

School House/Kill Bill Connector Multi-use, multi directional trail built to provide connections to downtown and parking, close hiking/dog walking loop, consolidate social use and increase looping options with existing trails

Abrams Gulch Reroute By re-routing Abrams Gulch we can improve and provide desired, easier area access without a new trail, improve the trail experience all while reducing grazing and watershed impacts.

Hermit Trail Epic backcountry, technical trail offering a technically challenging downhill experience containing natural landing jumps/drops and steep/technical rocky sections for the upper section of the trail. The lower section will offer a scenic, natural feeling singletrack.

World's Greatest Alternative Proposed as a blue flow trail that traverses a ridge line. Serves as an alternative to World's Greatest and provides a new descending experience.

Deadcow & Firebox Reroutes Re-routes provide motorized & non-motorized access supported by RMSR, watershed improvements, significantly better access to Mike's Night Out and Hermit Trail with limited new impact.

Impacts of School House/Kill Bill Connector

Pros

- Provide designed, managed use in an area that has extensive social use
- Eagle Valley Wildland has reviewed the SH/KB alignment and strongly agrees that it is a significant opportunity to provide fuels reduction and wildfire mitigation to protect the Town of Eagle. We are discussing wildfire mitigation approaches and opportunities with the BLM that could be implemented on this trail and other trail alignments in this proposal
- Provide a valuable connection between existing trails
- Have access points that can be signed and closed for seasonal wildlife closures
- In existing impact zone for wildlife
- Close to home access to trails for more users

Cons

- Some impact to adjacent neighborhood (alignment has been moved primarily onto BLM managed land to reduce impact on adjacent neighborhood while remaining in already impacted area for wildlife)

Supporting Docs

Botany and Archeo Surveys

<https://www.dropbox.com/scl/fo/lxyaav616gimium6xygns/ALVbesg8rxBzrdWJ9YnSeaM?rlkey=94ek84vjmgdv9bx47wrtfg6j9&st=9g1vq4z7&dl=0>

Proposal Submitted to BLM

<https://www.dropbox.com/scl/fo/k72sv7qzyc3ezwmfdlt3k/AHnWLxLHG5rAAIXK0qpbR6s?rlkey=soq85zn1k6tgy0r1d1sy4w442&st=5io0nInd&dl=0>



Figure 9. Trail Recommendations Map

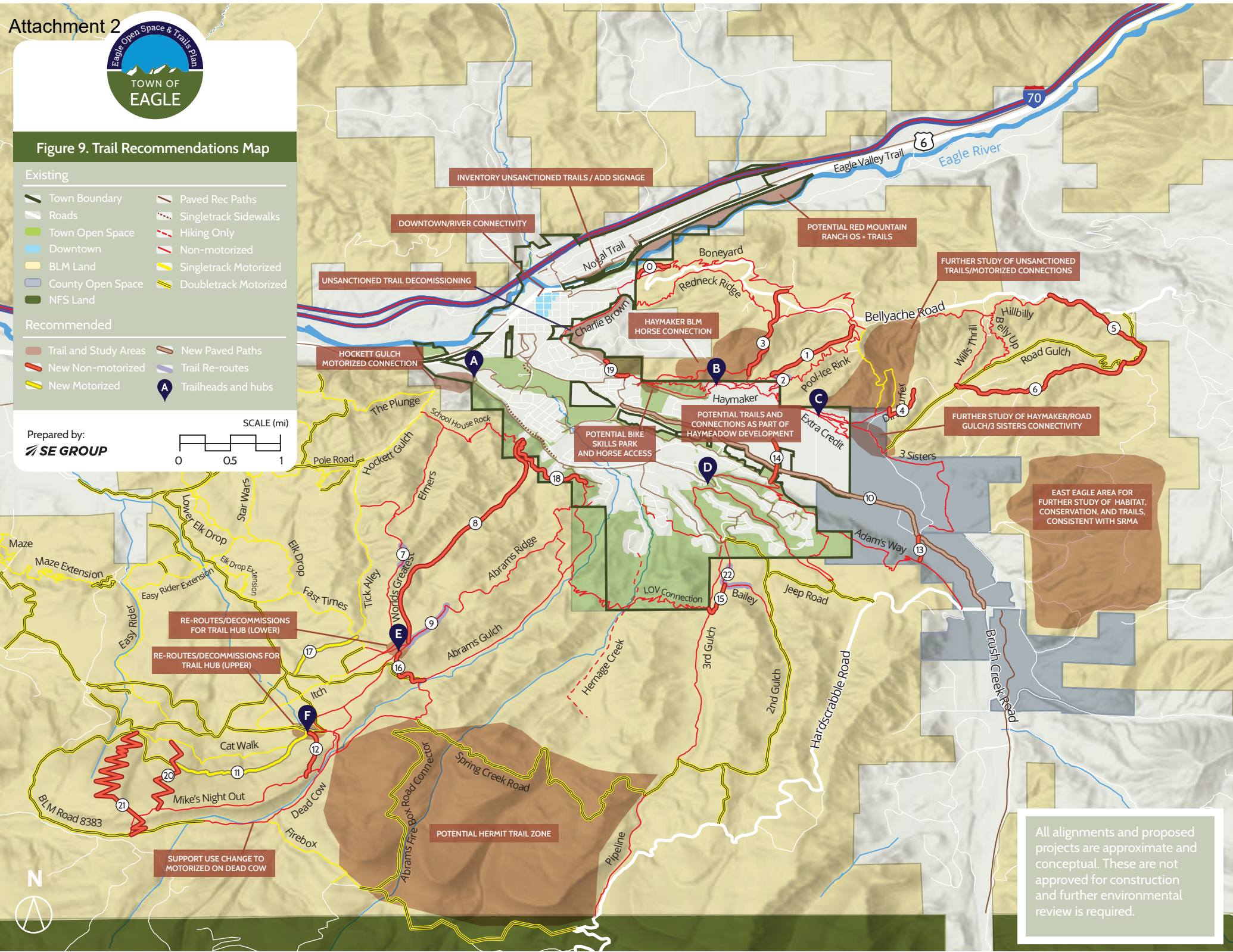
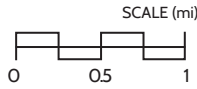
Existing

- Town Boundary
- Roads
- Town Open Space
- Downtown
- BLM Land
- County Open Space
- NFS Land
- Paved Rec Paths
- Singletrack Sidewalks
- Hiking Only
- Non-motorized
- Singletrack Motorized
- Doubletrack Motorized

Recommended

- Trail and Study Areas
- New Non-motorized
- New Motorized
- New Paved Paths
- Trail Re-routes
- Trailheads and hubs

Prepared by:
SE GROUP



INVENTORY UNSANCTIONED TRAILS / ADD SIGNAGE

DOWNTOWN/RIVER CONNECTIVITY

POTENTIAL RED MOUNTAIN RANCH OS - TRAILS

UNSANCTIONED TRAIL DECOMMISSIONING

FURTHER STUDY OF UNSANCTIONED TRAILS/MOTORIZED CONNECTIONS

HOCKETT GULCH MOTORIZED CONNECTION

HAYMAKER BLM HORSE CONNECTION

FURTHER STUDY OF HAYMAKER/ROAD GULCH/3 SISTERS CONNECTIVITY

POTENTIAL BIKE SKILLS PARK AND HORSE ACCESS

POTENTIAL TRAILS AND CONNECTIONS AS PART OF HAYMEADOW DEVELOPMENT

EAST EAGLE AREA FOR FURTHER STUDY OF HABITAT, CONSERVATION, AND TRAILS, CONSISTENT WITH SRMA

RE-ROUTES/DECOMMISSIONS FOR TRAIL HUB (LOWER)

RE-ROUTES/DECOMMISSIONS FOR TRAIL HUB (UPPER)

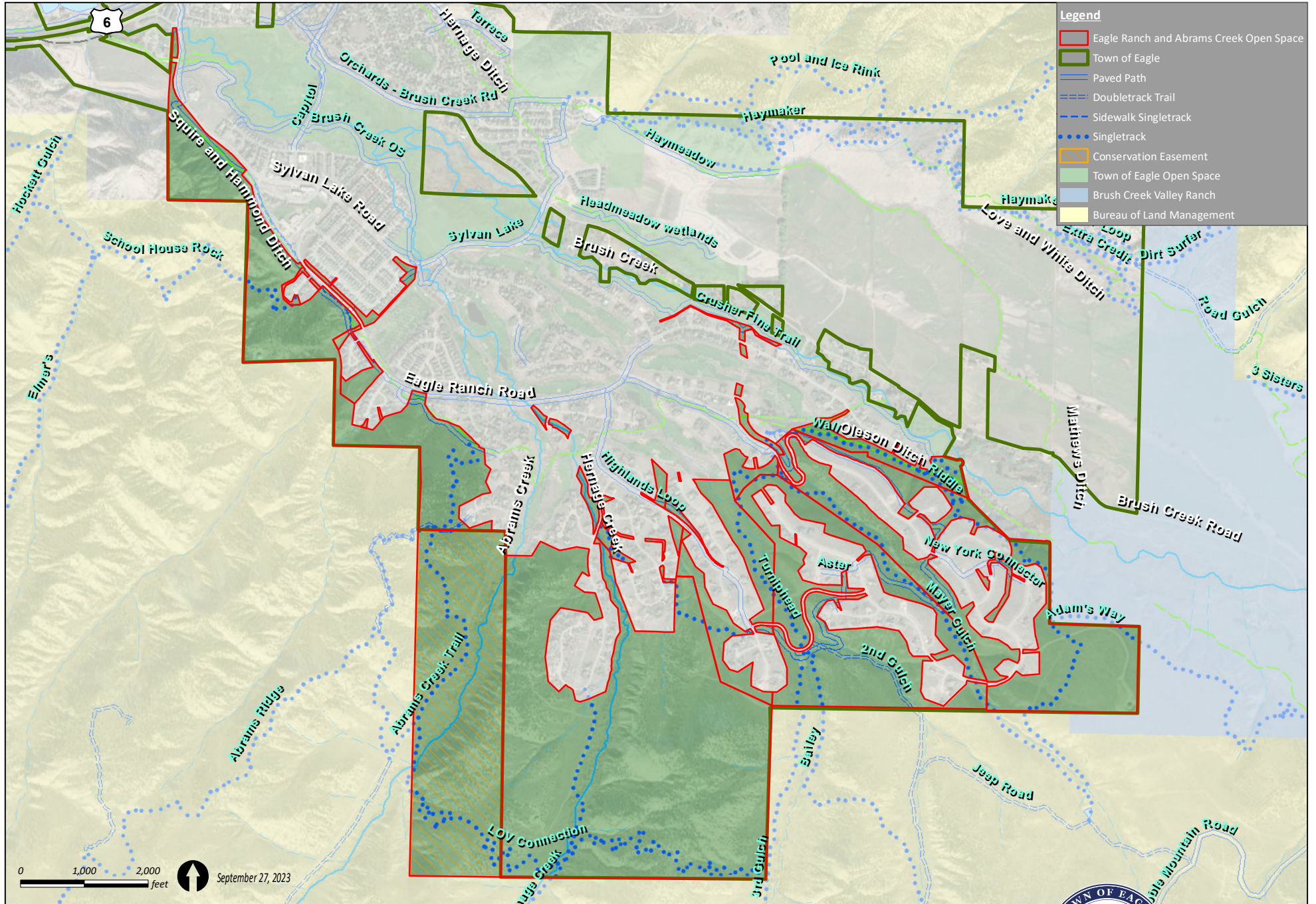
POTENTIAL HERMIT TRAIL ZONE

SUPPORT USE CHANGE TO MOTORIZED ON DEAD COW

All alignments and proposed projects are approximate and conceptual. These are not approved for construction and further environmental review is required.



Attachment 3:



Recreation

Eagle Ranch and Abrams Creek Open Space • Town of Eagle Open Space Management Plans

